



Mini Cabin 1  
FLOOR PLANS

# MISTY RIVER

## List Of Specifications Steel Skid Cottage

### CONSTRUCTION (SECTION A)

- Steel loading skid designed to length of cabin
- 2x4 (optional) 2 x 6 exterior walls with R20 fiberglass insulation;
- R20 (optional R40) ceiling insulation
- R20 (optional R30 floor)
- 6 mil poly vapor barrier caulked at all joints;
- 2x10 joists @ 16" O/C.;
- 3/4 OSB tongue and groove sub floor glued
- 3/8 underlay (tile areas)
- Roof trusses are 24" on center Engineered trusses;
- 7/16" osb roof sheathing;
- 3/8" osb sheathing on walls;
- Seamless metal roofing
- Pine wall finishing throughout
- Log purlins/Pine ceiling great room

### EXTERIOR (SECTION B)

- Log siding exterior, finished with water borne oil stain stain and clear coated with Enviromently friendly UV protection
- Pre finished metal soffits, fascia
- Dual (optional) glazed windows (wicker vinyl)
- Insulated steel exterior doors
- one frost-free water taps;
- Electrical as per (code)
- Covered veranda front/log railings(optional)

### PLUMBING TO INCLUDE

- (1) Water closets; (water saver)
- (1) Oval basins;
- (1) Fiberglass tub; (5 ft) optional 32-36" shower
- (1) Stainless steel kitchen sink
- (1) wall pack demand water heater high efficient
- All faucets are single lever chrome finish. (Moen)
- Adaptable flush lavatory or environmentally friendly composting toilet

### FLOOR COVERING TO INCLUDE

- floor covering allowance laminate lino (optional hardwood tile)

### CABINETS

Kitchen cabinets and vanities European style Oak or Maple(choice)

### HEATING SYSTEM

- (1) propane furnace with all metal ductwork

### INTERIOR FINISHING TO INCLUDE

- Mirrors over sinks;
- Brass weiser or equal door hardware with a locking door on all bathrooms;
- Light fixture allowance (\$.75 per sq. ft.)
- All door 6 panel c/w matching casing and baseboards,
- Window casing 3" pine stained
- Baseboards 3 1/2" stained
- Wire shelving

### FIREPLACE

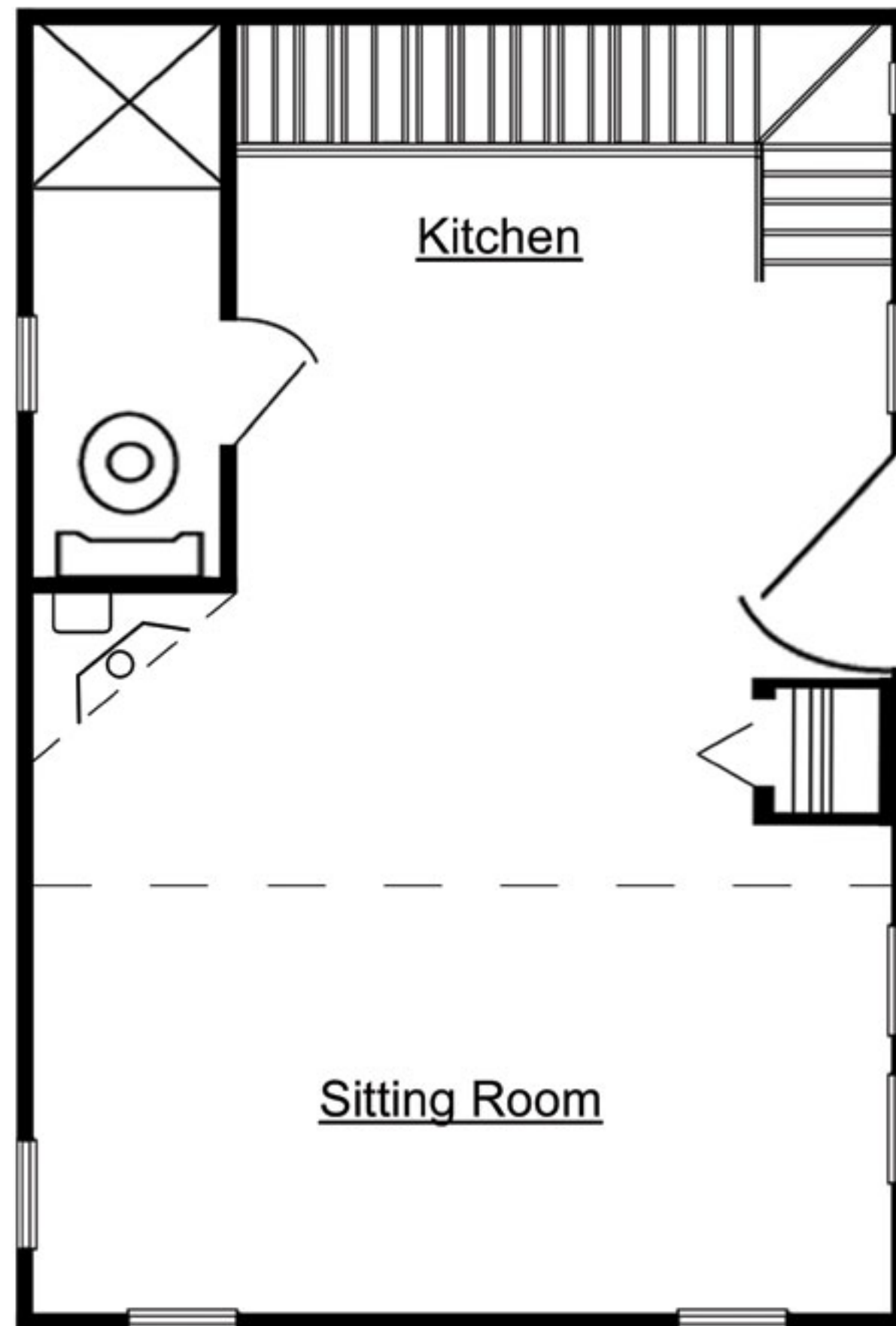
- Propane/gas/wood/ fireplace Ceramic (optional) River rock fireplace
- Mantle to accent(timber)

### WATER

- (1 pressure system designed to conditions of customer

### POWER

- 100 amp 220 V service/ 50 amp 120 V service adaptable.
- Poly vapor hats around electrical outlets on all outside walls;
- Range hood





**Misty River Log Homes**

Phone: 1.780.416.1598

Toll Free: 1.866.45MISTY

Fax: 1.780.416.1528

Email: [henry@mistyriverloghomes.com](mailto:henry@mistyriverloghomes.com)